



Model 648PROG
Side-by-Side Refrigerator/Freezer

Born of 100% steel (and a good bit of bravado), the Model 648PROG is a true masterpiece of preservation. Its glass door, sculpted metal, dual refrigeration with three evaporators and advanced controls marry performance and design in a bold new way for home refrigeration. So it not only keeps foods magnificently fresh, it brings the whole kitchen tastefully up to date. Model 648PROG can be built-in or used in a free-standing application.



Model 648PROG shown in a built-in application. Also shown is Wolf Model DF486C dual fuel range.

Features

- Stainless steel construction—inside and out—with classic stainless finish and glass refrigerator door
- Dual refrigeration system
- Electronic digital controls with exterior temperature display
- Advanced interior lighting with channeled sidewall LEDs that can serve as a night light
- Cantilevered shelves are adjustable and spill-proof
- Slide-out stainless steel bins fit neatly under any shelf
- Touch-and-glide crisper drawer has a glass lid and generous humidity
- Adjustable, removable and interchangeable drawer dividers
- Auto-close advanced hinge system
- Door alarm
- Automatic ice maker with water filtration system
- Meets strict Department of Energy requirements



Slide-Out Bins



Glass Crisper Lid

Model Options

Model Options	648PROG	648PROHAG
Stainless Steel Finish	Classic	Classic
High Altitude Glass (for installations above 5,000')		■

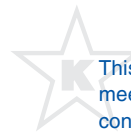
Interior Features

- **Refrigerator (door and two drawers)**
 - 3 Adjustable Glass Shelves
 - 1 Stationary Glass Shelf
 - 2 Adjustable Stainless Steel Slide-Out Bins
 - 1 Glass Crisper Lid
 - Interchangeable Drawers Dividers
 - Triple-Pane UV-Resistant Glass Door
 - Optional High Altitude Glass
- **Freezer (door and two drawers)**
 - Automatic Ice Maker
 - Water Filtration Filter
 - 3 Adjustable Stainless Steel Shelves
 - 1 Stationary Stainless Steel Shelf
 - Stainless Steel Ice Bucket
- Exterior Temperature Display
- Auto-Close Advanced Hinge System

Accessories

- 90 degree door stop kit—right or left hinge
- Dozen egg container with lid
- Slide-out refrigerator bin
- Classic stainless steel side panel
- Free-standing kit—includes two classic stainless steel side panels and top lid
- Refrigerator drawer dividers
- Classic stainless steel front and side toe kicks

Accessories are available through your Sub-Zero dealer. To obtain local dealer information, visit the Locator section of our website, subzero.com.



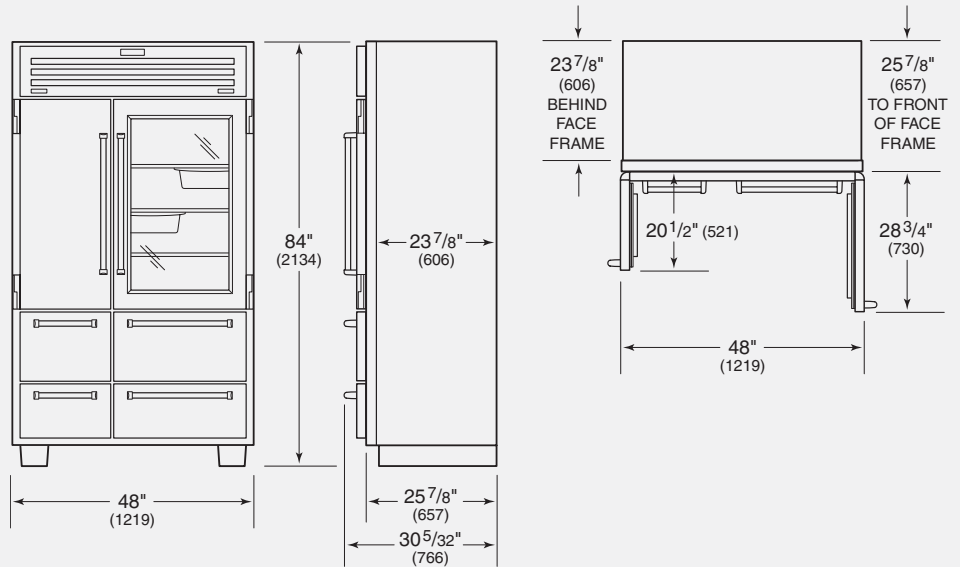
This appliance is certified by Star-K to meet strict religious regulations in conjunction with specific instructions found on www.star-k.org.





Model 648PROG
Side-by-Side Refrigerator/Freezer

Overall Dimensions



Unit dimensions may vary by ±1/8".

Specifications

Overall Width	48"
Overall Height	84"
Overall Depth (behind face frame)	23 7/8"
(to front of face frame)	25 7/8"
Door Swing Clearance	28 3/4"
Refrigerator Capacity	18.4 cu ft
Freezer Capacity	11.7 cu ft
Finished Opening (standard)	47 1/2" W x 83 3/4" H x 24" D
(flush)	48" W x 84 1/8" H x 26" D
Minimum Height Required	83 1/2"
Electrical Requirements	115 V AC, 60 Hz 15 amp dedicated circuit
Plumbing Requirements	1/4" OD copper line 35-120 psi
Annual Energy Usage	\$63*
Shipping Weight	875 lbs

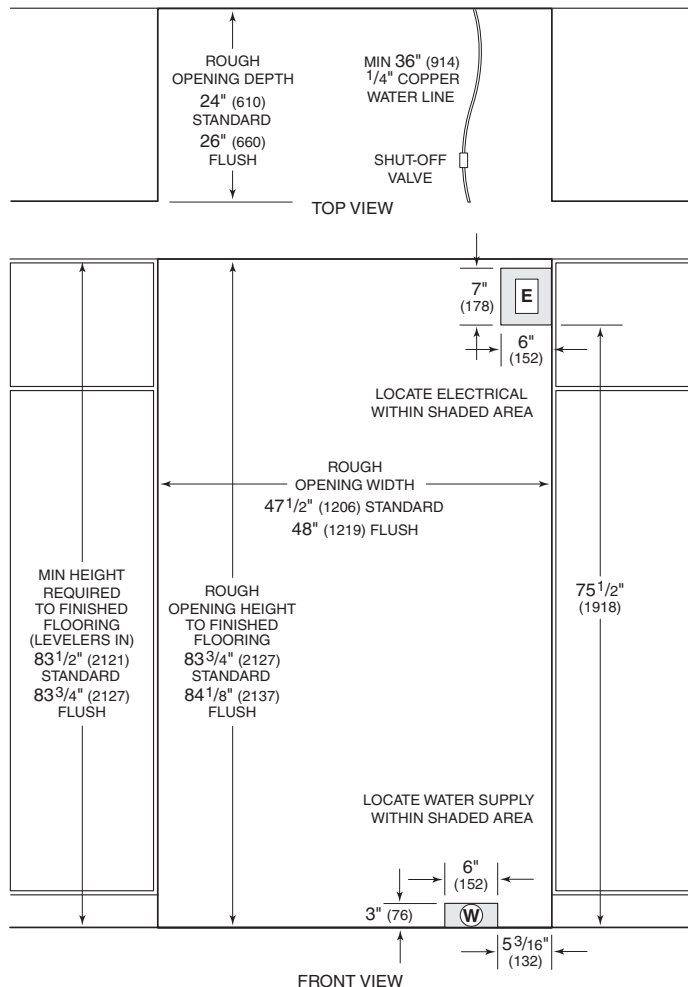
*Based on 9.06 cents per kilowatt hour.

Installation Notes

Model 648PROG can be used free-standing or installed as a standard or flush built-in application. For standard built-in installations, the face frame of the unit will extend 2" beyond cabinetry. In flush built-in installations, the front of the face frame will be flush with surrounding cabinetry.

Complete installation specifications, including panel sizes, can be found on our website, subzero.com.

Installation Specifications



Dimensions in parentheses are in millimeters unless otherwise specified.